



#### MSI WORLDWIDE OFFICES

##### MSI Headquarters

Micro-Star International Co., Ltd.  
No. 69, Li-De St., Jung-He City,  
Taipei Hsien, Taiwan  
Tel: 886-2-3234-5599 (REP)  
Fax: 886-2-3234-5488 (REP)  
<http://www.msi.com.tw>

##### China

Micro-Star International Co., Ltd.  
Tel: 0755-82829299  
Fax: 0755-83991650  
<http://www.msi-china.com.cn>

##### Hong Kong

Micro-Star International  
(Hong Kong) Co., Ltd.  
Tel: 852-2148-9221  
Fax: 852-2148-9161  
<http://www.microstar.com.hk>

##### Korea

MSI Korea Co., Ltd.  
Tel: +82-2-2068-4038  
Fax: +82-2-2068-4315  
<http://www.msi-korea.co.kr>

##### Serbia

MSI Balkan d.o.o.  
Tel: +381-11-311-6208  
Fax: +381-11-311-9969

##### Ukraine

Micro-Star International Co., Ltd.  
Tel: +380 44 457 88 12  
Fax: +380 44 457 93 33  
<http://www.msi-ukraina.com>

##### Australia

MSI Computer (Australia) Pty. Ltd.  
Tel: 61-2-9748-0070  
Fax: 61-2-9748-0799  
<http://www.msicomputer.com.au>

##### Czech Republic

MSI Czech & Slovak Office  
Tel: +420-543-518-200

##### India

MSI Computer India Private Limited  
Tel: +91-11-4175-8088, 4270-1424  
Fax: +91-11-4175-8809  
<http://www.msi-india.com>

##### Latin America

MSI Miami Corp.  
Tel: 1-305-591-2229  
Fax: 1-305-591-9929  
<http://www.msiami.com>

##### The Netherlands

Mystar Computer B.V.  
Tel: 31-40-267-6600  
Fax: 31-40-267-6622  
<http://www.msi-computer.nl>

##### U.S.A.

MSI Computer Corp. (L.A. Office)  
Tel: 1-626-913-0828  
Fax: 1-626-913-0818  
<http://www.msicomputer.com>

##### Brazil

MSI Computer do Brasil Ltda.  
Tel: 55-11-4191-6138  
Fax: 55-11-4191-6245  
<http://www.msicomputer.com.br>

##### France

MSI Computer SARL  
Tel: 33-1-6476-4949  
Fax: 33-1-6476-4948  
<http://www.msi-computer.fr>

##### Italy

Micro-Star Netherlands Holding  
B.V. Italy Office  
Tel: +39 02 45 47 9899  
Fax: +39 02 87 38 1683  
<http://www.msi-computer.it>

##### Poland

MSI-Polska SP. Z O.O.  
Tel: +48-22-848-1443  
Fax: +48-22-849-1787  
<http://www.msi-polska.pl>

##### Turkey

Micro-Star NL Holding BV Turkey  
Liaison Office  
Tel: +90-216-456-99-70/71/72  
Fax: +90-216-456-99-73  
<http://www.msi.com.tr>

##### Canada

MSI Computer (Canada) Ltd.  
Tel: +1-905-470-2006  
Fax: +1-905-470-8797  
<http://www.msi-computer.ca>

##### Germany

MSI Technology GmbH  
Tel: 49-69-40893-0  
Fax: 49-69-40893-202  
<http://www.msi-computer.de>

##### Japan

MSI Computer Japan Co., Ltd.  
Tel: 81-3-5817-3389  
Fax: 81-3-5817-3387  
<http://www.msi-computer.co.jp>

##### Russia

Micro-Star International Co., Ltd  
Tel: +7-495-981-4509  
Fax: +7-495-981-4508  
<http://www.microstar.ru>

##### UK

MSI Computer (UK) Ltd.  
Tel: 44-208-813-6688  
Fax: 44-208-813-6608  
<http://www.msicomputer.co.uk>



The ASA (American Soybean Association) has granted authorization of permit. The use of soy ink demonstrates MSI's commitment to protect and restore the natural resources.

- † All functions above are optional for all of MSI products.
- † MSI is a trademark of Micro-Star Int'l Co., Ltd.
- † Specifications are subject to change without notice.
- † All brand names are registered trademarks of their respective owners.
- † Any configuration other than original product specification is not guaranteed.
- † Product lists may or may not be available in other countries or regions of the world.



H01-0000920



# Graphics Card

## NVIDIA® Product Series



## Leading Edge 3D Visual Effects & Speed

Opens up a new world of real-time visual effects to PC gamers



'09 Spring



## MSI N280GTX / N260GTX Series

MSI N280GTX / N260GTX Series come with a number of technologies from MSI and NVIDIA® to provide you with more stunning 3D visual experience.

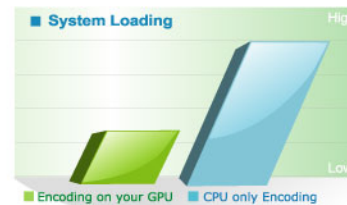


### 2nd Generation NVIDIA® Unified Architecture

The 2nd-generation architecture delivers 50% more gaming performance over the 1st generation through 240 enhanced processing cores that provide incredible shading horsepower.

### 7X faster - GPU Powered Transcoding

CUDA™ technology unlocks the power of the GPU's processing cores to accelerate the most demanding system tasks such as video transcoding, delivering up to 7X the performance of traditional CPUs.



### NVIDIA® PhysX™ Ready

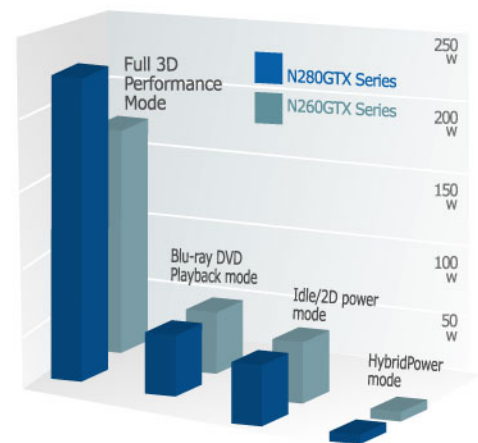
MSI N280GTX & N260GTX series support NVIDIA® PhysX™ technology which enables a totally new class of physical gaming interaction for a more dynamic and realistic experience.



### Power Management Enhancement

MSI N280GTX/N260GTX series graphics cards support the latest NVIDIA® HybridPower™ technology that switches from discrete GPU to mainboard GeForce® GPU while running non graphics-intensive applications for a quiet, low-power PC experience.

### Power Consumption



### 3-way NVIDIA SLI®



MSI N280GTX or N260GTX Series graphics cards run in 3-way NVIDIA® SLI™ mode on the new NVIDIA® nForce® 780i and 790i motherboards which

enable 50%~100% more performance over a single GPU for the ultimate gaming upgrade.

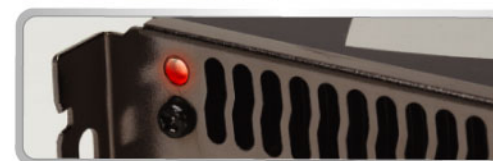


### Smart Power Input Identifying

MSI's exclusive Smart Power Input Identifying technology can easily check the graphics card if it is installed correctly and ensure the full effectiveness of the graphics card.



● All 6Pins/ 8Pins are properly installed



● One of 6 Pins/ 8Pins are not properly installed

## N280GTX-T2D1G SuperOC



Core Clik	700 MHz
Shader Clik	1400 MHz
Mem Clik	2300 MHz
memory Interface	512 bit
Memory	1GB DDR3
PhysX & CUDA Tech.	Yes
Unified Architecture	Yes
Quantum Effects	Yes
Stream Processors	240
DirectX / OpenGL	10 / 2.1
Shader Model	4
HDCP	YES
I/O	HDTV-Out, Two Dual-Link DVI, DVI-to-HDMI ready
Cooler	High Efficiency 2-Slot Fan
Interface	PCI Express 2.0



## N280GTX-T2D1G(OC)



Core Clik	650 / 602 MHz
Shader Clik	1300 / 1296 MHz
Mem Clik	2300 / 2214 MHz
memory Interface	512 bit
Memory	1GB DDR3
PhysX & CUDA Tech.	Yes
Unified Architecture	Yes
Quantum Effects	Yes
Stream Processors	240
DirectX / OpenGL	10 / 2.1
Shader Model	4
HDCP	YES
I/O	HDTV-Out, Two Dual-Link DVI, DVI-to-HDMI ready
Cooler	High Efficiency 2-Slot Fan
Interface	PCI Express 2.0



## N260GTX-T2D896(OC)



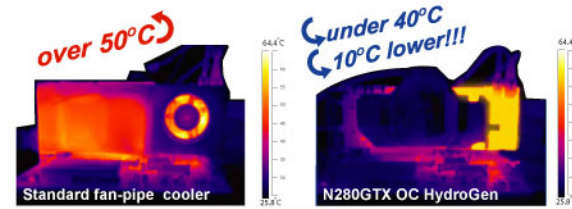
Core Clik	620 / 576 MHz
Shader Clik	1296 / 1242 MHz
Mem Clik	2160 / 1998 MHz
memory Interface	448 bit
Memory	896MB DDR3
PhysX & CUDA Tech.	Yes
Unified Architecture	Yes
Quantum Effects	Yes
Stream Processors	216 / 192
DirectX / OpenGL	10 / 2.1
Shader Model	4
HDCP	YES
I/O	HDTV-Out, Two Dual-Link DVI, DVI-to-HDMI ready
Cooler	High Efficiency 2-Slot Fan
Interface	PCI Express 2.0



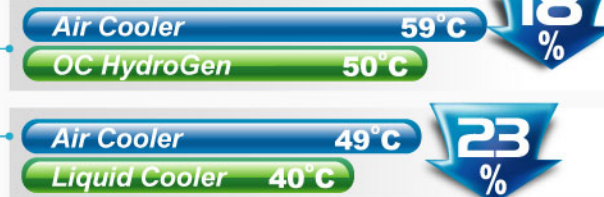


## N280GTX OC HydroGen

MSI HydroGen liquid cooler comes with all-copper and micro-channel design which dramatically helps for dissipating heat generated by graphics card. Micro-channel technology massively increases over-all conducting surface inside the 1-slot copper tank and MSI HydroGen liquid cooler has very tight contact with almost all components on PCB, such as: GPU, GDDR Memory, MOSFET and NVIO chips. The superior design transfers heat so rapidly that it can nearly drop the temperature in real time!



### The Ultimate Cooling Power of MSI N280GTX OC HydroGen



### Universal Free Tubing Design

Now you can install any kind of tube with different dimensions as you want! As long as the metal connector fits the standard G $\frac{1}{4}$  Zoll (DIN ISO 228-1) dimension of the phenomenal MSI HydroGen all-copper micro-channel liquid cooler. You can benefit from using existing water-cooling system or build a customized one without spending extra cash on additional parts.



Note: The metal connectors and tubes are NOT included in the box; these DEMO are for references only! →

### HydroGen Series Graphics Card & Motherboard

Now you can enjoy the convenience and excellent cooling performance by choosing MSI HydroGen Series!



## N280GTX OC HydroGen



Core Clk	700 MHz
Shader Clk	1400 MHz
Mem Clk	2300 MHz
memory Interface	512 bit
Memory	1GB DDR3
PhysX & CUDA Tech.	Yes
Unified Architecture	Yes
Quantum Effects	Yes
Stream Processors	240
DirectX / OpenGL	10 / 2.1
Shader Model	4
HDCP	YES
I/O	HDMI, Two Dual-Link DVI, S/PDIF-in
Cooler	1-slot copper tank
Interface	PCI Express 2.0



## N9800GX2 Series

MSI N9800GX2 series utilizes the latest NVIDIA® Dual-GPU architecture and HybridPower™ technology to provide gamers unprecedented extreme performance and unparalleled fine quality. User can adjust the quiet or power-saving mode to achieve environmental-friendly atmosphere.



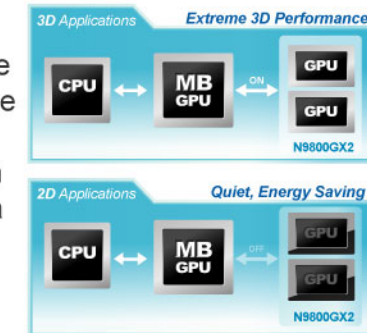
### NVIDIA® Quad SLI™

Through NVIDIA Quad SLI™ technology and coupled with MSI nForce® 790i Ultra SLI series motherboard, users can use two dual-GPU N9800X2-M2D1G graphics card to enjoy 2560 x 1600 high-resolution and 4X speed anti-aliasing and perform super realistic 3D experience.

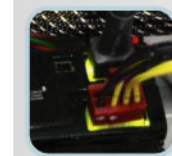


### NVIDIA® HybridPower™ technology

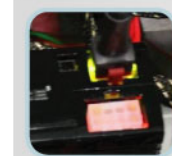
HybridPower™ technology allows the system to release strong graphics performance if necessary. Day-to-day operations of computing can be automatically converted to a quiet, low-power mode to achieve environmental-friendly atmosphere.



### Smart Power Input Identifying



Once both 6 or 8 Pin well plugged, connectors show Green LED light.



No matter 6 or 8 Pin not plugged well, power connector will show Red light.

## N9800GX2-M2D1G



Core Clk	600 MHz
Shader Clk	1500 MHz
Mem Clk	2000 MHz
memory Interface	256 + 256 bit
Memory	1GB DDR3
PhysX & CUDA Tech.	Yes
Unified Architecture	Yes
Quantum Effects	Yes
Stream Processors	128 + 128
DirectX / OpenGL	10 / 2.1
Shader Model	4
HDCP	YES
I/O	HDMI, Two Dual-Link DVI, S/PDIF-in
Cooler	High Efficiency 2-Slot Fan
Interface	PCI Express 2.0





## 2-Slot Cooler with 6mm pipe X4

The MSI 2-Slot efficient radiator design can quickly ruled out the heat of full-speed operation or overclocking. It helps run the 3D games smoothly and sustain a more stable computer system.

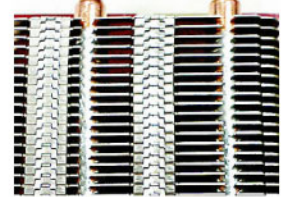
### Metal-hood

Enhanced with extra 12 vents to give the highest possible air-flow.

### HDTV Out

### Welded-pipe

Provides a better way of cooling efficiency than normal "insertion-only" fabrication.



### Quieter Fan

Even with its 3500RPM high speed, the fan only generates 32db(A) noise in full loading which is much quieter than 58db(A) of reference design.

### 6mm pipe X4

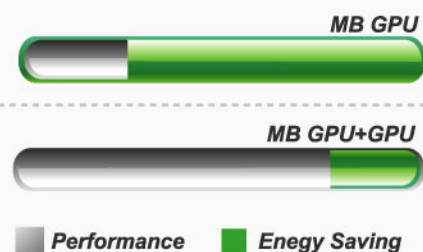
20% better heat transfer rate than 5mm 4-pipe design.



## HybridPower™ (Optional)



HybridPower™ technology allows the system to release strong graphics performance if necessary. Day-to-day operations of computing can be automatically converted to a quiet, low-power mode to achieve environmental-friendly atmosphere.



## PhysX™ Ready

MSI N9800GT series supports the latest NVIDIA® PhysX™ technology, enabling a totally new class of physical gaming interaction for a more dynamic and realistic experience with GeForce®.



## 3-way NVIDIA® SLI®

Industry leading 3-way NVIDIA SLI technology offers amazing performance scaling by implementing AFR(Alternate frame Rendering) under Windows Vista with solid, state-of-the-art drivers.

## CUDA™ Technology

CUDA™ technology unlocks the power of the GPU's processing cores to accelerate the most demanding system tasks such as video transcoding, delivering up to 18X the performance of traditional CPUs.



## N9800GTX PLUS-(T)2D1G(OC)



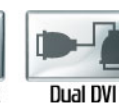
Core Ck	760 / 738 MHz
Shader Ck	1880 / 1836 MHz
Mem Ck	2300 / 2200 MHz
memory Interface	256 bit
Memory	1GB DDR3
PhysX & CUDA Tech.	Yes
Unified Architecture	Yes
Quantum Effects	Yes
Stream Processors	128
DirectX / OpenGL	10/2.1
Shader Model	4
HDCP	YES
I/O	HDTV-Out(optional), Two Dual-Link DVI, DVI-to-HDMI ready
Cooler	High Efficiency 2-Slot Fan
Interface	PCI Express 2.0



## N9800GTX PLUS-(T)2D512(OC)



Core Ck	760 / 738 MHz
Shader Ck	1880 / 1836 MHz
Mem Ck	2300 / 2200 MHz
memory Interface	256 bit
Memory	512MB DDR3
PhysX & CUDA Tech.	Yes
Unified Architecture	Yes
Quantum Effects	Yes
Stream Processors	128
DirectX / OpenGL	10/2.1
Shader Model	4
HDCP	YES
I/O	HDTV-Out(optional), Two Dual-Link DVI, DVI-to-HDMI ready
Cooler	High Efficiency 2-Slot Fan
Interface	PCI Express 2.0



## N9800GT-T2D512(OC)



Core Ck	760 / 738 MHz
Shader Ck	1880 / 1836 MHz
Mem Ck	2300 / 2200 MHz
memory Interface	256 bit
Memory	512MB DDR3
PhysX & CUDA Tech.	Yes
Unified Architecture	Yes
Quantum Effects	Yes
Stream Processors	128
DirectX / OpenGL	10 / 2.1
Shader Model	4
HDCP	YES
I/O	Two Dual-Link DVI, HDTV-Out
Cooler	High Efficiency 2-Slot Fan
Interface	PCI Express 2.0





## MSI Zilent Series

New Zalman Cooler (MSI N9800GT / N9600GT / N9500GT Zilent Series) comes with a heat-pipe, heat-sink and Intelligent High-speed Fan. The highly-tuned design implementation, not only decreases the GPU temperature rapidly, but also delivers whisper-quiet cooling and ensures quiet operation.



**Vacuum Copper Heat-pipe**  
The four high thermal conductivity heat pipes design effectively accelerates thermal conduction.

### VFP Technology

Supports Zalman's exclusive VFP (Variable Fin Profile) technology. The embedded fan heat-sink is designed to disperse heat effectively and faster.

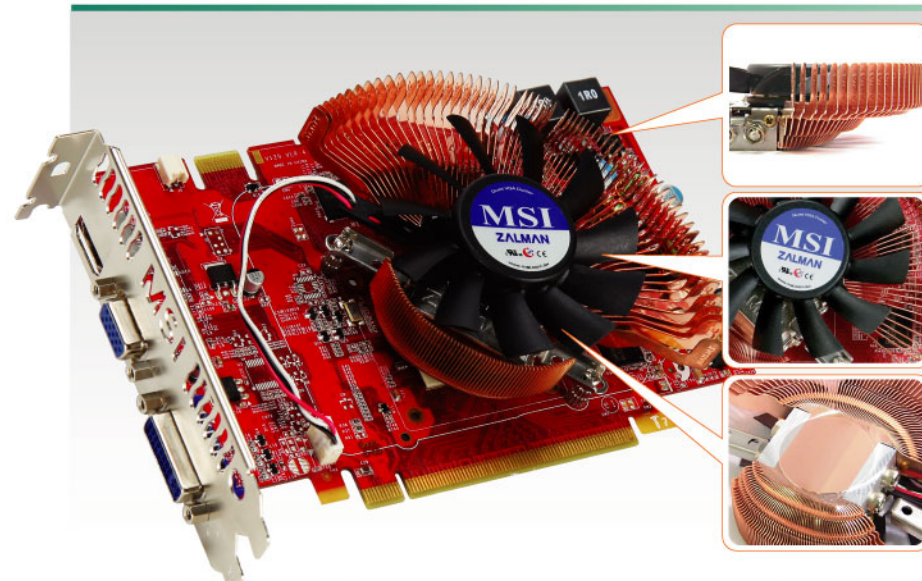
### Intelligent High-speed Fan

Mute-fan can be used to adjust in accordance with the rotational speed.

### Specific Heat-sink

The heat-sink has been specifically designed for the chip and GPU.

MSI NX8800GT Zilent	MSI GeForce8800GT Ref.
Temperature(°C) 55°C	Temperature(°C) 69°C
Noise 30dBA	Noise 50dBA



### Ultra Thin Copper Heat Sink

Utilized the lightweight 0.2mm ultra thin heat-sink which features low air pressure and rapid thermal emission.

### Ultra High-Speed & Quiet Fan

The high-speed 3650rpm quiet fan with the high winds can quickly disperse the heat.

### Pure Copper base material

Pure Copper base material ensures excellent heat.

## CUDA™ Technology

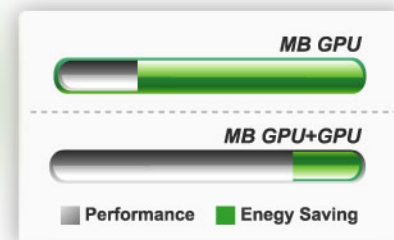


CUDA™ technology unlocks the power of the GPU's processing cores to accelerate the most demanding system tasks such as video transcoding, delivering up to 18X the performance of traditional CPUs.

transcoding, delivering up to 18X the performance of traditional CPUs.

## HybridPower™ (Optional)

HybridPower™ technology allows the system to release strong graphics performance if necessary. Day-to-day operations of computing can be automatically converted to a quiet, low-power mode to achieve environmental-friendly atmosphere.



## PhysX™ Ready



MSI N9800GT series supports the latest NVIDIA® PhysX™ technology, enabling a totally new class of physical gaming interaction for a more dynamic and realistic experience with GeForce®.

## N9800GT Zilent



Core Ck	660 / 600 MHz
Shader Ck	1625 / 1500 MHz
Mem Ck	1900 / 1800 MHz
memory Interface	256 bit
Memory	512MB DDR3
PhysX & CUDA Tech.	Yes
Unified Architecture	Yes
Quantum Effects	Yes
Stream Processors	112
DirectX / OpenGL	10/2.1
Shader Model	4
HDCP	YES
I/O	Two Dual-Link DVI, HDTV-Out
Cooler	High Efficiency 2-Slot Fan
Interface	PCI Express 2.0

## N9600GT Zilent 1G(OC)



Core Ck	700 / 650 MHz
Shader Ck	1750 / 1688 MHz
Mem Ck	1900 / 1800 MHz
memory Interface	256 bit
Memory	1GB DDR3
PhysX & CUDA Tech.	Yes
Unified Architecture	Yes
Quantum Effects	Yes
Stream Processors	64
DirectX / OpenGL	10/2.1
Shader Model	4.0
HDCP	Yes
I/O	HDTV-Out, Two Dual-Link DVI, DVI-to-HDMI ready
Cooler	2-Slot Zalman Fan
Interface	PCI Express 2.0

## N9500GT Zilent



Core Ck	550 MHz
Shader Ck	1400 MHz
Mem Ck	1600 MHz
memory Interface	128 bit
Memory	512 MB DDR3
PhysX & CUDA Tech.	Yes
Unified Architecture	Yes
Quantum Effects	Yes
Stream Processors	32
DirectX / OpenGL	10 / 2.1
Shader Model	4
HDCP	Yes
I/O	HDMI(Native), D-Sub(optional), Dual-link DVI
Cooler	2-Slot Zalman Fan
Interface	PCI Express 2.0

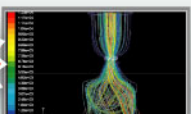


## MSI Special Seaweed-Blade™ Fan



Seaweed-blade Fan applies hydro-mechanics that makes the most powerful air-flow and highest air-pressure real at the same time. Comparing to fan-cooling with normal blade, MSI Seaweed-blade Fan gives you less noise and lower temperature at once.

### MSI Special Seaweed-Blade™ Fan

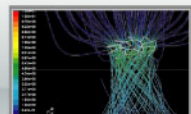


**Good**  
+ Regulated air-flow + Higher air-pressure  
+ Low noise & Better Cooling!



30.9 dBA

### Standard Blade



+ Mess air-flow + Low air-pressure  
+ Higher noise, higher temperature

33.3 dBA

## N9600GT-T2D2G/1G/512/256(OC)



Core Clk	700 / 650 MHz
Shader Clk	1750 / 1625 MHz
Mem Clk	1900 / 1800 MHz
memory Interface	256bit
Memory	2GB / 1GB / 512MB / 256MB DDR3
PhysX & CUDA Tech.	Yes
Unified Architecture	Yes
Quantum Effects	Yes
Stream Processors	64
DirectX / OpenGL	10.0 / 2.1
Shader Model	4.0
HDCP	Yes
I/O	HDTV-Out, Two Dual-Link DVI, DVI-to-HDMI ready
Cooler	1-Slot or 2-Slot Seaweed-blade Fan
Interface	PCI Express 2.0



## N9600GSO-T2D768/384(OC)



Core Clk	600 / 550 MHz
Shader Clk	1500 / 1375 MHz
Mem Clk	1800 / 1600 MHz
memory Interface	192 bit
Memory	768MB / 384MB DDR3
PhysX & CUDA Tech.	Yes
Unified Architecture	Yes
Quantum Effects	Yes
Stream Processors	96
DirectX / OpenGL	10.0 / 2.1
Shader Model	4.0
HDCP	Yes
I/O	HDTV-Out, Two Dual-Link DVI, DVI-to-HDMI ready
Cooler	2-Slot Seaweed-blade Fan
Interface	PCI Express 2.0



## MSI Hybrid Frozr Technology

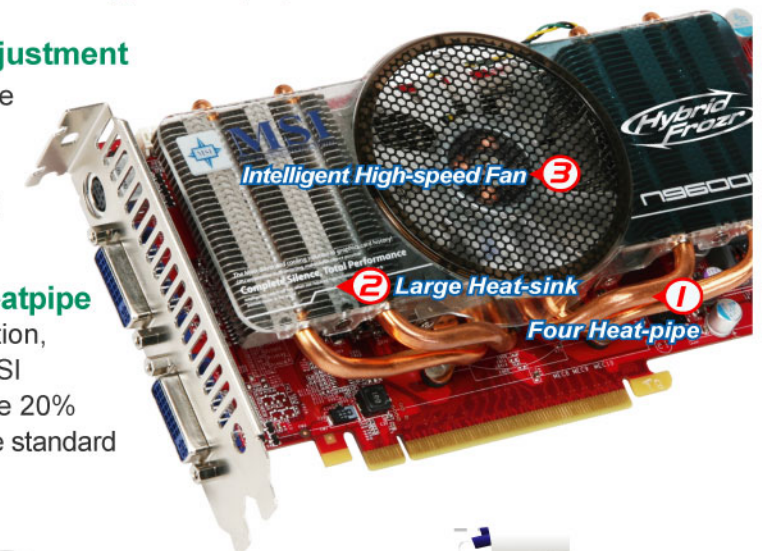
Hybrid Frozr that combines large Heat-sink, Heat-pipe, as well as advanced intelligent fans to dissipate heat faster and save more energy. It uses less energy and helps protect the environment.

### Hybrid Frozr automatic fan speed adjustment

The graphics card comes with a temperature monitoring function that allows user to determine the temperature of the system, adjust the fan speed to optimize airflow and conserve energy as well.

### Hybrid Frozr employs a thick 6mm heatpipe

In order to guarantee effective heat conduction, MSI uses only the highest quality material. MSI employs four thick 6mm heatpipes to provide 20% higher heat conduction quantity instead of the standard 5mm heatpipe.



### 3D Applications

When user play 3D games, the GPU will increase its temperature that will activate the fan to start running. MSI graphic cards come with intelligent high-speed fan (2200RPM) than can draw the heat away and decrease the temperature. When the temperature is lower, the fans will automatically stop which can help save energy.



Performance (GPU Loading)	HIGH
Save Energy (2200 RPM)	LOW

### 2D Applications

When using word-processing software or other 2D applications, the GPU remains in low temperature, the heat-sink and heat-pipe will automatically pull the heat away from the components. There's no need to start the system fan, thus reducing power consumption.

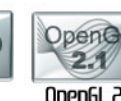


Performance (GPU Loading)	LOW
Save Energy (Fan OFF)	HIGHT

## N9600GT-Hybrid Frozr



Core Clk	675 / 650 MHz
Shader Clk	1650 / 1625 MHz
Mem Clk	1800 / 1800 MHz
memory Interface	256 bit
Memory	1GB DDR3
PhysX & CUDA Tech.	Yes
Unified Architecture	Yes
Quantum Effects	Yes
Stream Processors	64
DirectX / OpenGL	10.0 / 2.1
Shader Model	4.0
HDCP	Yes
I/O	HDTV-Out, Two Dual-Link DVI, DVI-to-HDMI ready
Cooler	2-Slot Hybrid Freezer cooler
Interface	PCI Express 2.0

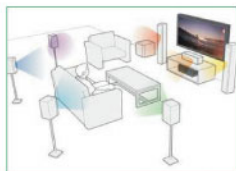




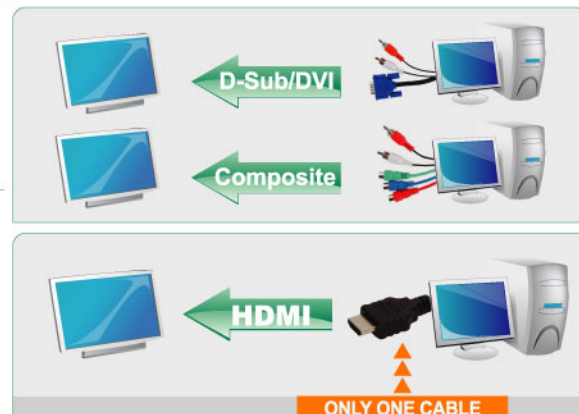
## HDMI Support

MSI graphics cards offer the HDMI functionality to provide access to premium digital content. HDMI enables gaming enthusiasts to seamlessly connect to their LCD monitor to bring the ultimate multimedia experience.

### HDMI 7.1ch. Audio Support



Built-in Audio Codec inside GPU  
Direct audio output via HDMI adapter  
without any internal/external SPDIF cable  
Playback Blu-Ray with on-Chip HDCP  
Support 7.1 Surround Sound in HDMI



### DVI / HDMI adapter

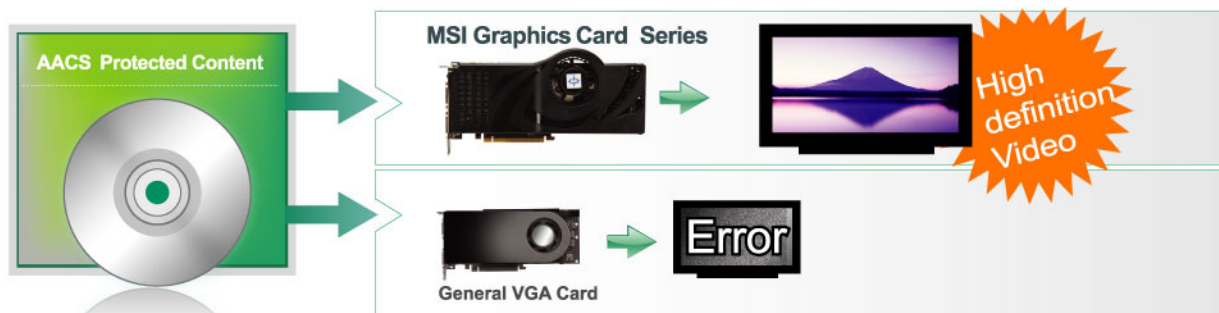


NVIDIA® GeForce® Series HD Series  
has a built in HDMI with HD audio  
support for one-plug HDTV connectivity.

MSI graphics card supports HDMI with audio integration solution. With a DVI-to-HDMI adapter and an extra signal cord through the bracket, audio source from sound card(S/PDIF) can be integrated into HDMI interface by simply plugging the cord into the pinhead located on graphics card.

## HDCP Capable

The HDCP provides a robust, cost-effective and transparent method for transmitting and receiving digital entertainment similar to DVI/HDMI-compliant digital displays. HDCP encrypts the data transmitted between the DVI/HDMI connector on the graphics adapter and the display.



## Blu-Ray and HD DVD Support

Both support the latest specifications of Blu-Ray and HD DVD (High Definition DVD). It comes with the latest GPU and DDR superior processing performance in which users can easily enjoy the high-definition video of 1920 x 1080 (1080p/i).

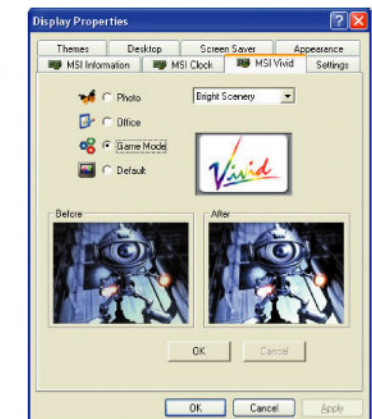


## MSI Vivid Image Technology



The "MSI Vivid" technology is an easy tool to enhance "image quality". It can help users get better image quality in viewing "digital photos, document & games".

- Bring the easiest way to optimize graphic quality!!!
- Colorize your vision when browsing digital photos!!
- Sharpen characters edge!!!
- Enhance contrast when playing game!!!



## MSI StarOSD, the best gaming utility



The MSI StarOSD is a very helpful utility for the avid PC gamers. Users can easily access the StarOSD to adjust the contrast, brightness, overclocking and temperature according to each user's individual preference. Simply press the hotkey [Ctrl+D] to launch the StarOSD window menu and [Ctrl+F1~F12] for the different menu functions.

This is good news to all game enthusiasts as MSI StarOSD is currently the first utility to allow overclocking even when playing a game.



## All Solid Capacitor



In order to guarantee the Graphics card optimal performance under a range of high operating conditions and maintain adequate cooling for the GPU, MSI

uses a full aluminum solid cap which is designed to withstand high operating temperatures and pressures. Although the overall production costs are high, it ensures users the best-in-class quality and reliability performance of the Graphics card.

## MSI Advanced Live Update Online

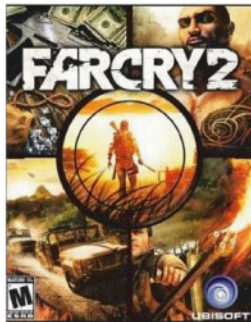


A totally easy and convenient way to update the BIOS and driver without hassle! The MSI Live Update online is designed to automatically

download and update the BIOS and driver when there's a new version online. It helps reduce the risk of getting the wrong file and minimize the trouble of searching the files from the website.



## Far Cry 2

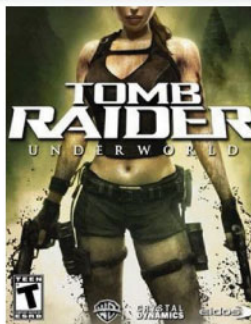


Gamespot Quote : Although you can't say the same for the plot, Far Cry 2's first-person action squeezes every last drop of potential out of the unique African setting.

- Incredible amount of freedom to approach each mission • 50 square kilometers of visually stunning African landscape • Hefty single-player campaign should take at least 30 hours • Diverse reward and upgrade systems feed off each other very well.

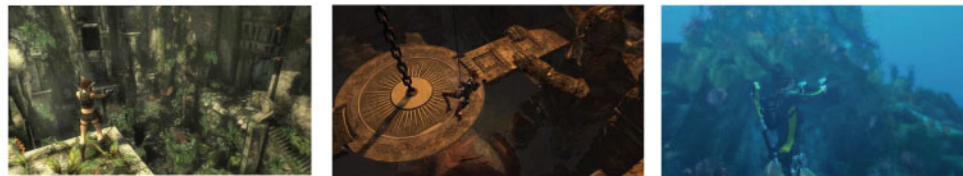


## Tomb Raider : Underworld



Gamespot Quote : Tomb Raider Underworld will satisfy fans of Lara's previous adventures, but it does little to address previous games' problems.

- Excellent mix of outdoor, underground, and underwater locations • Lara's new moves add to her existing abilities • Some excellent level and puzzle design.



## Tom Clancy's Rainbow Six® Vegas2



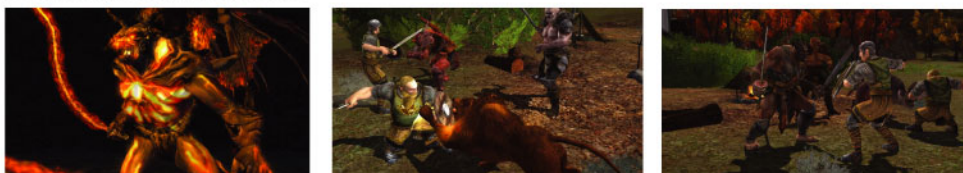
Gamespot Quote : Rainbow Six Vegas 2 is the best tactical shooter on the market. It doesn't gamble as much as it should and, instead, seems to take cover behind the formidable foundation established in the first game. But to its credit, Rainbow Six Vegas 2 does make one big gameplay tweak and provides another highly playable single-player campaign. It also provides a decent suite of cooperative options and more excellent online multiplayer.



## The Lord of the Rings



Gamespot Quote : The Lord of the Rings Online is a fun and accessible online role-playing game that does just enough to distinguish itself from its high-profile competition. Features: Quest-oriented gameplay is enjoyable and accessible Monster play is a unique take on the player-versus-player formula Story-based quests are rewarding and immersive



## N9500GT-MD1G / 512(Z)(OC)(D2)

Core Clk	650 / 550 MHz
Shader Clk	1400 / 1350 / 1500 MHz
Mem Clk	1600 / 1400 / 1000 / 800 MHz
memory Interface	128 bit
Memory	1GB / 512MB DDR3 / DDR2
PhysX & CUDA Tech.	Yes
Unified Architecture	Yes
Quantum Effects	Yes
Stream Processors	32
DirectX / OpenGL	10/2.1
Shader Model	4
HDCP	Yes
I/O	HDMI(Native), D-Sub(optional), Dual-link DVI
Cooler	High Efficiency 1-slot Fan
Interface	PCI Express 2.0

## N9400GT-MD1G / 512(Z) / 256(D2)

Core Clk	550 MHz
Shader Clk	1400 MHz
Mem Clk	1000 / 800 MHz
memory Interface	128 bit
Memory	1GB / 512MB / 256 MB DDR3 / DDR2
PhysX & CUDA Tech.	Yes
Unified Architecture	Yes
Quantum Effects	Yes
Stream Processors	32
DirectX / OpenGL	10/2.1
Shader Model	4.0
HDCP	Yes
I/O	HDMI(Native), D-Sub(optional), Dual-link DVI
Cooler	High Efficiency 1-slot Fan
Interface	PCI Express 2.0

## NX8400GS-TD256/512E(EH)

Core Clk	450 MHz
Shader Clk	1000 MHz
Mem Clk	800 MHz
memory Interface	64bit
Memory	512/ 256 MB DDR2
PhysX & CUDA Tech.	Yes
Unified Architecture	Yes
Quantum Effects	Yes
Stream Processors	16
DirectX / OpenGL	10/2.1
Shader Model	4.0
HDCP	Yes
I/O	HDTV-Out, Dual-Link DVI, DVI-to-HDMI ready
Cooler	Fan or Heatsink
Interface	PCI Express 16X